

# How to perform software upgrade on a WSA-408/308 instrument

*Application notes from Sage Instruments, 2026-6-2*

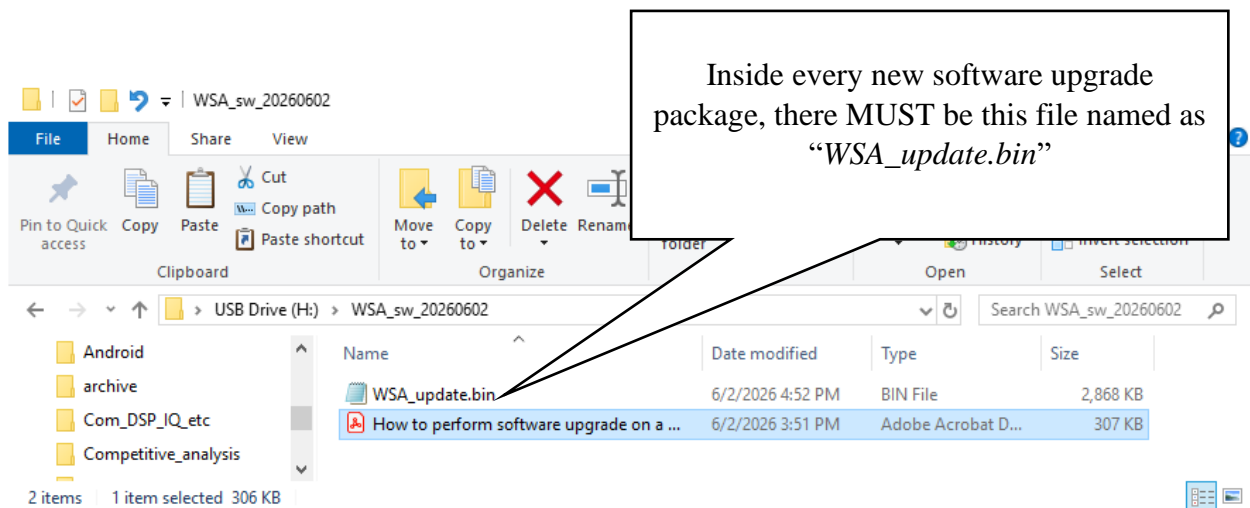
## Pre-requisites

To perform software upgrade, it's assumed that you already have the following:

1. A WSA-408 or WSA-308 that's already running.
2. A new software upgrade package from *Sage Instruments*.

## What's in a software upgrade package

What you receive from Sage tech support (or download from web-site) is a ZIP package typically named as “*WSA\_sw\_20260602.zip*”. Inside this ZIP package, you'll have files like those shown in Figure 1 once you unzip it or just browse into it.



*Figure 1, Inside every new software upgrade package, there must be a “WSA\_update.bin” file.*

The “WSA\_update.bin” file is all you need for software upgrade. Copy this file to the root folder of a USB thumb drive as shown in Figure 2.

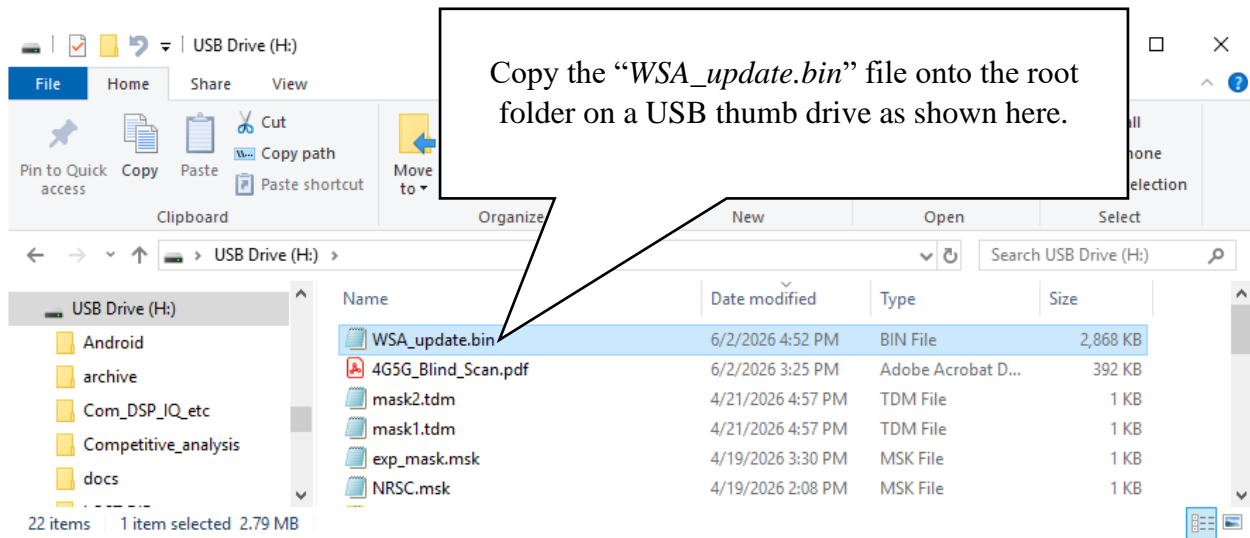


Figure 2, Copy the “WSA\_update.bin” file to the root folder on a USB drive.

Then plug this USB drive into the USB port of a WSA-408 that’s already running and also needs to be upgraded. On the WSA GUI, press the lower left (left-7) soft button as shown in Figure 3.

When running a WSA-308 on your PC, the software version is shown here

Press here to access “Software upgrade” function



Then press here to start “Software upgrade”.

Verify the running software version by selecting this

Figure 3, press left-7 button to access “Software upgrade”, then select “Software upgrade”.

After steps in Figure 3, the software upgrade process will take effect immediately. The GUI software will momentarily close itself (the screen will go dark briefly) quickly relaunch itself with the new software already taking effect.

#### How to check the new software version

To verify the actively running software version, follow the same step in Figure 3 but select the “System and Option Information” button. After this, you’ll see dialog and system information display as shown below in Figure 4.

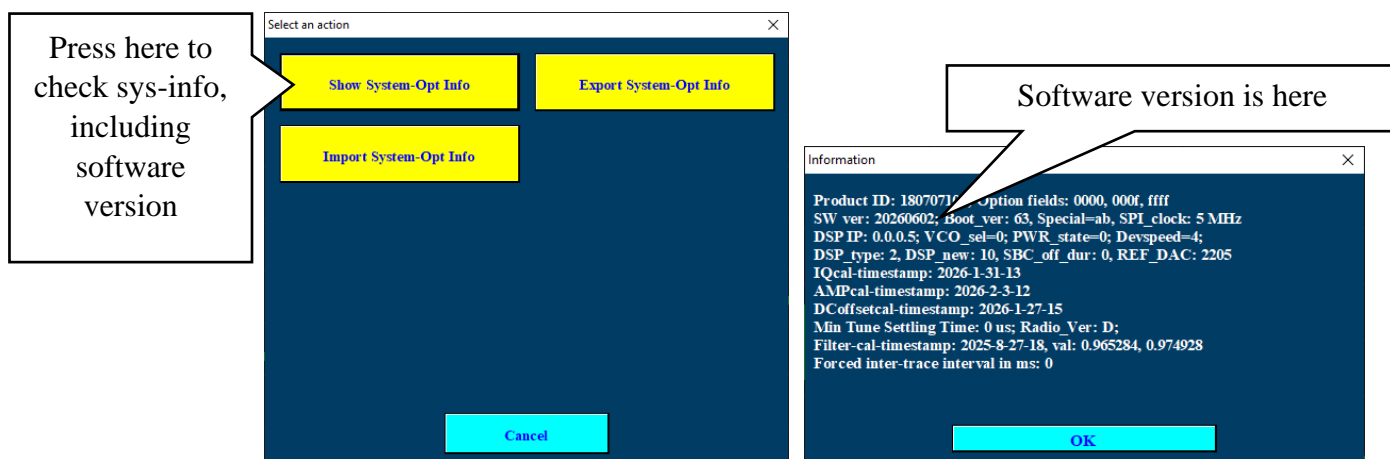


Figure 4, access the system information button and example system information display showing software version.

#### Simplified steps for upgrading a WSA-308

If you have a WSA-308, it’s assumed that you already have a version of older but complete WSA software application installed on your PC, and the “older” software is already running with a WSA-308 that has been turned on. For instructions on how to install the initial software package on your PC, please refer to another document titled “*WSA software installation and IP connection trouble-shooting*”.

To upgrade the WSA-308 software on your PC, you can follow identical steps as shown above, or optionally, do the following:

1. You can copy the “WSA\_udpate.bin” file to the root folder on your PC’s “C:” drive or “D:” drive, if you have the write privilege. This will save you the trouble from using a USB drive.
2. Then perform software upgrade according to the same steps shown in Figure 3, minus the USB drive.
3. After software upgrade, the new software version will automatically be shown on the GUI display’s title bar as shown in Figure 3.